



Household electrical safety



When you're around electricity, there are some things you need to consider to stay safe. Please keep the following safety tips in mind before you plan and begin home projects.

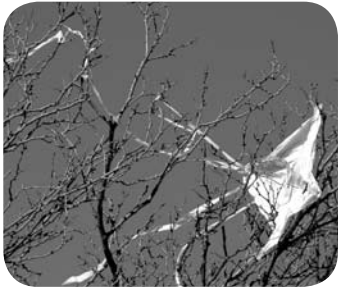
Outdoor safety

- Always look up and around when carrying ladders or other objects to make sure you won't come in contact with an overhead power line.



- Be aware of any nearby power lines before you climb a ladder.
- Never touch an overhead line if it has been brought down by a storm, fallen tree limb or machinery.
- Don't plant trees where they might grow tall enough to interfere with overhead lines.
- Always assume any downed overhead line is "alive." Stay away from it and never touch anything it contacts.
- Keep tools, materials and all parts of your body at least 10 feet away from overhead power lines at all times.
- Equip outdoor outlets with waterproof covers and GFCIs (ground fault current interrupters).
- If a power line falls on your car as a result of an accident, stay inside and use your cell phone to call **911**. If you don't have a phone, yell to someone to have them call for you. Do not attempt to leave your car until help arrives.

- Transformers for underground electric service are located in green boxes along property lines. If the boxes are opened or damaged, stay away from them and notify KCP&L immediately.
- Locate swimming pools, diving platforms and slides away from overhead lines. Keep pool skimming poles and other cleaning or safety equipment away from overhead lines.
- Always check above you before raising the mast on your sailboat or before launching or beaching it away from designated ramps.
- Never fly kites or model airplanes near power lines or radio and TV antennas.
- Use only dry, non-metallic string or cord to fly kites or model airplanes. Never use metal when constructing any flying toy.
- Don't let children play near utility equipment, poles or transformers.



Everyday safety

- Keep electrical tools and appliances away from water. Never use electrical tools or appliances if your hands or feet are wet.
- Immediately turn off any appliance that sputters, stalls or gives you even the slightest shock—and have it repaired before turning it on again.
- Always disconnect an electric appliance or tool by pulling the plug, rather than the cord.
- Unplug appliances when they are not in use.
- Have professionals inspect your furnace or heat pump annually to make sure it is operating efficiently and correctly.

- Avoid overloading outlets.
- Use power cords wisely:
 - Don't run power cords across driveways or other areas where they might become worn or severed.
 - Don't string multiple cords together. Never use damaged cords.
 - Never place cords under rugs or through doorways where they could trip someone or be subjected to excessive wear.
 - When outdoors, use cords marked "For Outdoor Use."
 - Replace worn or frayed cords or plugs with loose prongs.
- Look for the Underwriters Laboratory (UL) listing on every appliance you buy. Follow the manufacturer's instructions when using appliances.
- Make sure you have a properly charged, Class "C" fire extinguisher available to extinguish any electrical fire.
- Keep space heaters at least three feet away from any combustible materials such as bedding, clothing, draperies, furniture and rugs.
- If you use an electric heater, don't overload the circuit. Use extension cords wisely and don't overload them.
- Never use a range or an oven for supplemental heating. Not only is it a safety hazard, it can be a source of potentially toxic fumes.
- Make sure light bulbs are the correct wattage for the fixture.
- Install surge protection on sensitive electronic equipment to protect against power surges or lightning.

Need to trim a tree close to power lines?

Whether using a qualified tree service or doing it yourself, always call KCP&L first or e-mail vm@kcpl.com.



Stay safe when digging

Before starting any outdoor project that requires digging, call **811** toll-free to get your underground utility lines marked for free.

When you dial **811**, you will be connected to the One Call Center in your area. They will ask your utility companies to mark the approximate location of



underground lines within a few days. Once your lines are marked, you can dig safely.

Marking utility lines before planting trees, building decks or starting a host of other outdoor jobs protects you, your family and neighbors from injury and delays.

In addition to calling **811**, you can call your state's One Call Center directly.

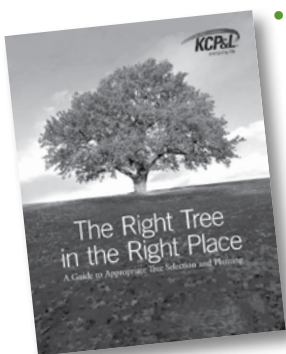
Kansas 1-800-DIG-SAFE
Missouri 1-800-DIG-RITE



Know what's below.
Call before you dig.

Helpful Resources

- To report kites or anything caught in an overhead line, call **(816) 471-5275** or **1-888-471-5275**.
- To report lights out, a downed power line or branches interfering with overhead lines, call **1-888-544-4852**.
- To talk with a KCP&L customer service representative, call **(816) 471-5275** or **1-888-471-5275**.
- For additional safety tips, visit www.kcpl.com.
- Call **911** immediately to report a life threatening or emergency situation.



- For information about tree planning and planting, visit www.kcpl.com/brochures/RightTree.pdf.

